

ReCAP CITY OF DEL MAR SNAPSHOT

The ReCAP Snapshot is prepared for the City as a part of the SANDAG Regional Climate Action Planning Framework (ReCAP) to support, but not replace, cities' monitoring greenhouse gas (GHG) emissions and/or climate action plan (CAP) implementation over time. Climate planning activities vary by jurisdiction and are dependent on a variety of factors, such as funding and staff capacity. As the first edition of Snapshots (November 2019), this document will set a baseline for monitoring trends into the future. More information, including a FAQ document and Methods and Data Sources Summary, is available at www.sandag.org/climate.

RECENT ACCOMPLISHMENTS

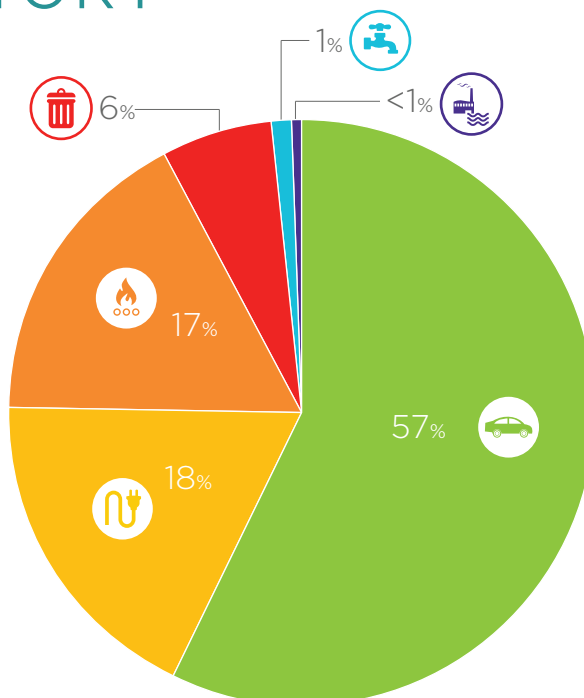
- 1 **Adopted** mandatory CalGreen Tier 1 building standards for all new commercial construction in Del Mar in June 2018.
- 2 **Funded** and **participated** in a joint Community Choice Aggregation (CCA) feasibility study with the Cities of Carlsbad, Encinitas, and Oceanside.
- 3 **Participated** in the development of a regional pilot bikeshare program with Solana Beach, Encinitas, Carlsbad, Oceanside, SANDAG, the North Coast Transit District (NCTD), and Camp Pendleton.
- 4 **Improved** recycling compliance at Powerhouse and Seagrove Parks and along City beaches.
- 5 **Adopted** a new CAP chapter on Social Equity (adopted by the City Council in May 2018).

GHG INVENTORY*

*This GHG inventory is based on 2016 data.

43,500 MT CO₂e
Total GHG emissions estimated for 2016

- ON-ROAD TRANSPORTATION
- ELECTRICITY
- NATURAL GAS
- SOLID WASTE
- WATER
- WASTEWATER



JURISDICTION QUICK FACTS

4,247
population in 2016

1.8
square miles

2,065
occupied housing units in 2016*

Current CAP progress:
Adopted 2016

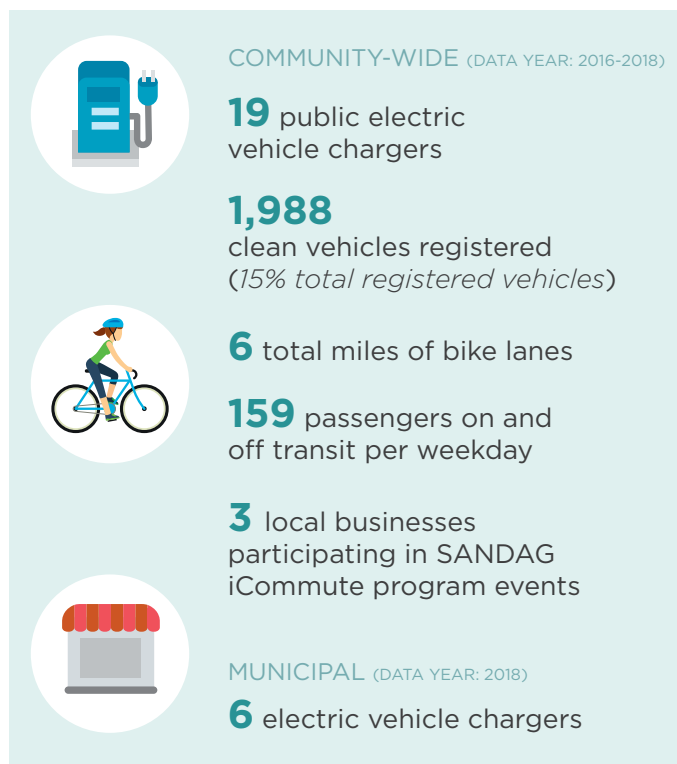
Subregion:
North County Coastal

* Occupied housing does not include group quarters.

ReCAP ACTIVITY DATA FOR THE CITY OF DEL MAR

These select activity data represent best available data* for common GHG reduction activities included in local CAPs across the SANDAG region and may not align precisely to GHG reduction measures and/or the metrics identified within a jurisdiction's CAP. Community-wide activities occur within a jurisdiction's boundaries; municipal activities occur at City-owned facilities. For more information on data sources, the Methods and Data Sources Summary is available at www.sandag.org/climate.

TRANSPORTATION



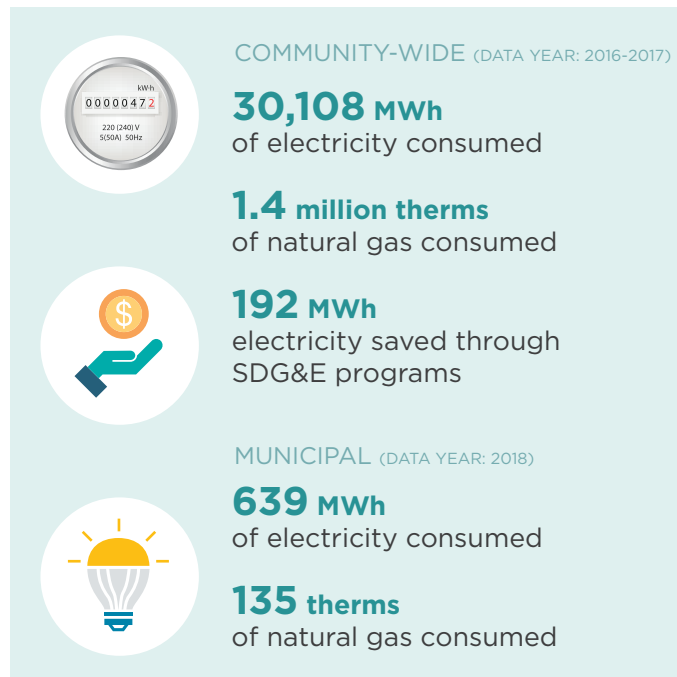
WATER + WASTEWATER



SOLID WASTE



ENERGY EFFICIENCY



RENEWABLE ENERGY

